

PiggyBacks

PIGBACKA0699

PIGBACKB0699

PiggyBack Detail

PiggyBack Detail

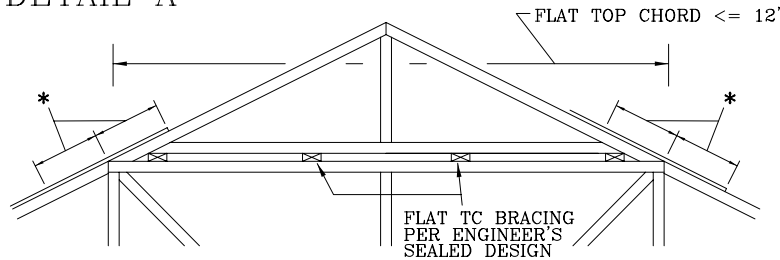
PIGGYBACK DETAIL

THE DETAILS BELOW ARE ACCEPTABLE FOR THE FOLLOWING WIND CONDITIONS:

80 MPH WIND, 30.00 FT MEAN HGT, ASCE 7-93, CLOSED BLDG,
LOCATED ANYWHERE IN ROOF, 100 MI FROM COAST,
CAT 1, EXP C, WIND TC DL=5.0 PSF, WIND BC DL=5.0 PSF.

80 MPH WIND, 30.00 FT MEAN HGT, SBC,
ENCLOSED BLDG, LOCATED ANYWHERE IN ROOF
WIND TC DL=5.0 PSF, WIND BC DL=5.0 PSF.

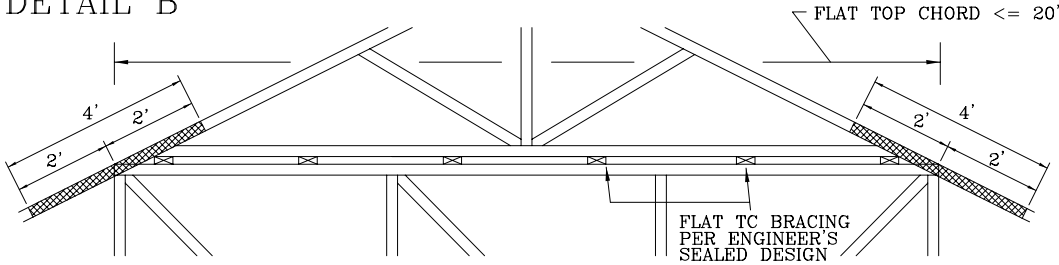
DETAIL A



PIGGYBACK CAP TRUSS TOENAILED TO ALL TOP CHORD BRACING WITH (2) 10d COMMON (0.148"x3") NAILS.

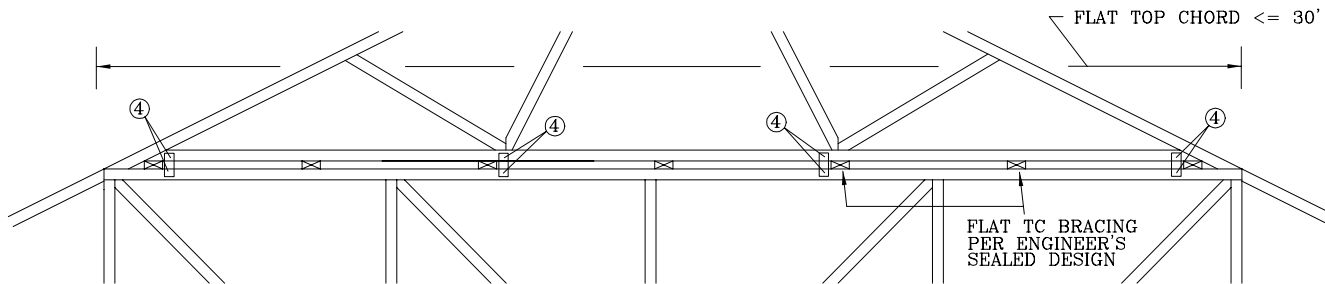
* 12" MIN RIGID SHEATHING OVERLAP WITH 8d COMMON (0.131"x2.5") OR GUN NAILS IN OVERLAP ZONE SPACED AT 4" O.C.

DETAIL B



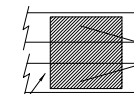
PIGGYBACK CAP TRUSS TOENAILED TO ALL TOP CHORD BRACING WITH (2) 10d COMMON (0.128"x3") NAILS AND SECURED WITH 2X4 #3 GRADE SCAB (1 SIDE ONLY) ATTACHED WITH 10d COMMON NAILS AT 4" O.C.

DETAIL C



CAP TRUSS TOENAILED TO TOP CHORD BRACING AND SECURED WITH 3X8 TRULOX PLATES (EACH FACE) AT EACH END AND 1/3 POINTS.

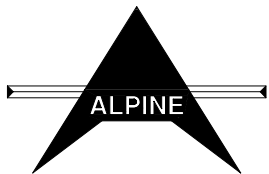
CIRCLED NUMBER INDICATES REQUIRED NUMBER OF 0.120" X 1.375" NAILS, OR EQUAL, PER FACE PER PLY. SEE DRAWING 160 TL FOR TRULOX INFORMATION.



(4) 8d COMMON NAILS (0.135"x2.5")

8" X 8" X 1/2" RATED SHEATHING GUSSETS (EACH FACE) MAY BE USED IN LIEU OF TRULOX PLATES, ATTACH WITH (8) 8d COMMON NAILS PER GUSSET, (4) IN CAP BC AND (4) IN BASE TRUSS FLAT TC.

THIS DRAWING REPLACES DRAWINGS 581,670 & 961,860



****WARNING**** TRUSSES REQUIRE EXTREME CARE IN FABRICATING, HANDLING, SHIPPING, INSTALLING AND BRACING. REFER TO HIB-91 (HANDLING INSTALLING AND BRACING), PUBLISHED BY TPI (TRUSS PLATE INSTITUTE, 583 D'ONOFRIO DR., SUITE 200, MADISON, WI. 53719) FOR SAFETY PRACTICES PRIOR TO PERFORMING THESE FUNCTIONS. UNLESS OTHERWISE INDICATED, TOP CHORD SHALL HAVE PROPERLY ATTACHED STRUCTURAL PANELS AND BOTTOM CHORD SHALL HAVE A PROPERLY ATTACHED RIGID CEILING. ****IMPORTANT**** FURNISH A COPY OF THIS DESIGN TO THE INSTALLATION CONTRACTOR. ALPINE ENGINEERED PRODUCTS, INC. SHALL NOT BE RESPONSIBLE FOR ANY DEVIATION FROM THIS DESIGN. ANY FAILURE TO BUILD THE TRUSSES IN CONFORMANCE WITH TPI OR FABRICATING, HANDLING, SHIPPING, INSTALLING AND BRACING OF TRUSSES. DESIGN CONFORMS WITH APPLICABLE PROVISIONS OF NDS (NATIONAL DESIGN SPECIFICATION PUBLISHED BY THE AMERICAN FOREST AND PAPER ASSOCIATION) AND TPI. ALPINE CONNECTORS ARE MADE OF 20GA ASTM A653 GR40 GALV. STEEL EXCEPT AS NOTED. APPLY CONNECTORS TO EACH FACE OF TRUSS AND, UNLESS OTHERWISE LOCATED ON THIS DESIGN, POSITION CONNECTORS PER DRAWINGS 160 A-Z. THE SEAL ON THIS DRAWING INDICATES ACCEPTANCE OF PROFESSIONAL ENGINEERING RESPONSIBILITY SOLELY FOR THE TRUSS COMPONENT DESIGN SHOWN. THE SUITABILITY AND USE OF THIS COMPONENT FOR ANY PARTICULAR BUILDING IS THE RESPONSIBILITY OF THE BUILDING DESIGNER, PER ANSI/TPI 1-1995 SECTION 2.

TC LL	PSF	REF	PIGGYBACK
TC DL	PSF	DATE	06/25/99
BC DL	PSF	DRWG	PIGBACKA0699
BC LL	PSF	-ENG	DLJ/KAR
TOT.LD.	MAX 60 PSF		
DUR.FAC.	1.15		
SPACING	24.0"		

TOP CHORD 2X4 #2 OR BETTER
 BOT CHORD 2X4 #2 OR BETTER
 WEBS 2X4 #3 OR BETTER

PIGGYBACK DETAIL

REFER TO SEALED DESIGN FOR DASHED PLATES.

SPACE PIGGYBACK VERTICALS AT 4' OC MAX.

TOP AND BOTTOM CHORD SPLICES MUST BE STAGGERED SO THAT ONE SPLICE IS NOT DIRECTLY OVER ANOTHER.

PIGGYBACK BOTTOM CHORD MAY BE OMITTED. ATTACH VERTICAL WEBS TO TRUSS TOP CHORD WITH 1.5X3 PLATE.

ATTACH PURLINS TO TOP OF FLAT TOP CHORD. IF PIGGYBACK IS SOLID LUMBER OR THE BOTTOM CHORD IS OMITTED, PURLINS MAY BE APPLIED BENEATH THE TOP CHORD OF SUPPORTING TRUSS.

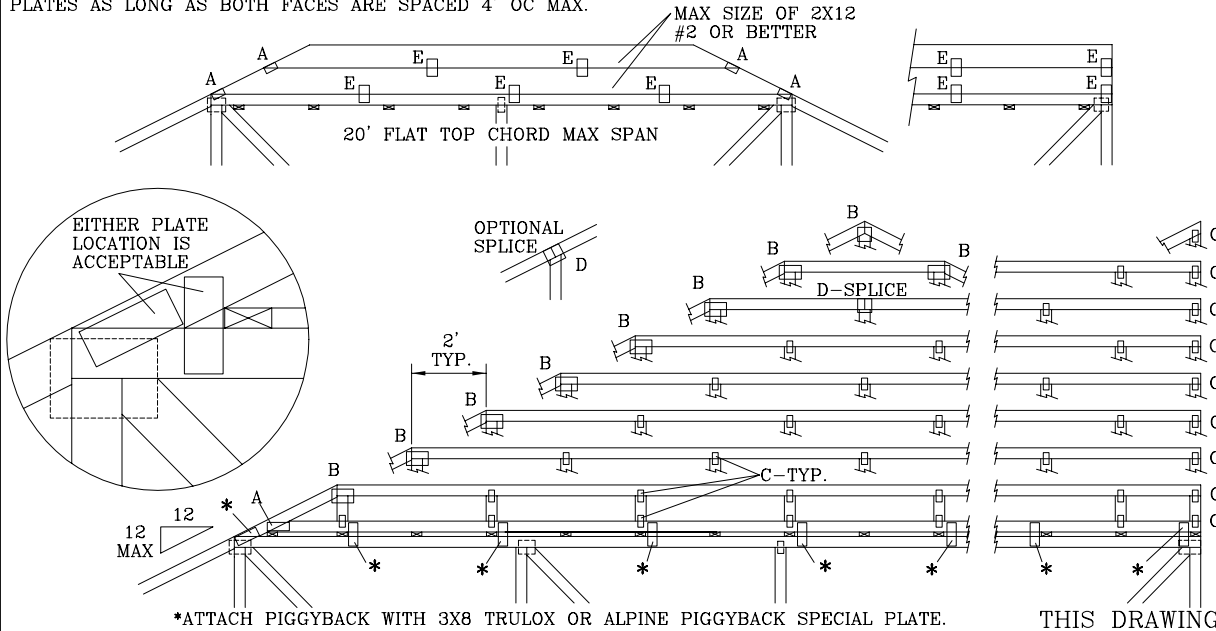
REFER TO ENGINEER'S SEALED DESIGN FOR REQUIRED PURLIN SPACING.

THIS DETAIL IS APPLICABLE FOR THE FOLLOWING WIND CONDITIONS:

110 MPH WIND, 30' MEAN HGT, ASCE 7-93, CLOSED BLDG,
 LOCATED ANYWHERE IN ROOF, 1 MI FROM COAST
 CAT I, EXP C, WIND TC DL=5 PSF, WIND BC DL=5 PSF

110 MPH WIND, 30' MEAN HGT, SBC
 ENCLOSED BLDG, LOCATED ANYWHERE IN ROOF
 WIND TC DL=5 PSF, WIND BC DL=5 PSF

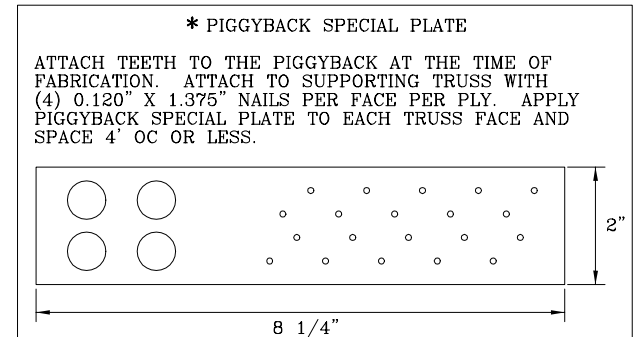
FRONT FACE (E,*) PLATES MAY BE OFFSET FROM BACK FACE PLATES AS LONG AS BOTH FACES ARE SPACED 4' OC MAX.



JOINT TYPE	SPANS UP TO			
	30'	34'	38'	52'
A	2X4	2.5X4	2.5X4	3X5
B	4X6	5X6	5X6	5X6
C	1.5X3	1.5X4	1.5X4	1.5X4
D	5X4	5X5	5X5	5X6
E	4X6 OR 3X6 TRULOX AT 4' OC, ROTATED VERTICALLY			

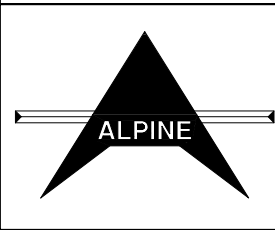
ATTACH TRULOX PLATES WITH (8) 0.120" X 1.375" NAILS, OR EQUAL, PER FACE PER PLY. (4) NAILS IN EACH MEMBER TO BE CONNECTED. REFER TO DRAWING 160 TL FOR TRULOX INFORMATION.

WEB LENGTH	WEB BRACING CHART	
	REQUIRED BRACING	
0' TO 7'9"	NO BRACING	
7'9" TO 10'	1x4 "T" BRACE. SAME GRADE, SPECIES AS WEB MEMBER, OR BETTER, AND 80% LENGTH OF WEB MEMBER. ATTACH WITH 8d NAILS AT 4" OC.	
10' TO 14'	2x4 "T" BRACE. SAME GRADE, SPECIES AS WEB MEMBER, OR BETTER, AND 80% LENGTH OF WEB MEMBER. ATTACH WITH 16d NAILS AT 4" OC.	



*ATTACH PIGGYBACK WITH 3X8 TRULOX OR ALPINE PIGGYBACK SPECIAL PLATE.

THIS DRAWING REPLACES DRAWINGS 634,016 634,017 & 847,045



****WARNING**** TRUSSES REQUIRE EXTREME CARE IN FABRICATING, HANDLING, SHIPPING, INSTALLING AND BRACING. REFER TO HIB-91 (HANDLING INSTALLING AND BRACING), PUBLISHED BY TPI (TRUSS PLATE INSTITUTE, 583 D'ONOFRIO DR., SUITE 200, MADISON, WI. 53719) FOR SAFETY PRACTICES PRIOR TO PERFORMING THESE FUNCTIONS. UNLESS OTHERWISE INDICATED, TOP CHORD SHALL HAVE PROPERLY ATTACHED STRUCTURAL PANELS AND BOTTOM CHORD SHALL HAVE A PROPERLY ATTACHED RIGID CEILING. ****IMPORTANT**** FURNISH A COPY OF THIS DESIGN TO THE INSTALLATION CONTRACTOR. ALPINE ENGINEERED PRODUCTS, INC. SHALL NOT BE RESPONSIBLE FOR ANY DEVIATION FROM THIS DESIGN; ANY FAILURE TO BUILD THE TRUSSES IN CONFORMANCE WITH TPI OR FABRICATING, HANDLING, SHIPPING, INSTALLING AND BRACING OF TRUSSES. DESIGN CONFORMS WITH APPLICABLE PROVISIONS OF NDS (NATIONAL DESIGN SPECIFICATION PUBLISHED BY THE AMERICAN FOREST AND PAPER ASSOCIATION) AND TPI. ALPINE CONNECTORS ARE MADE OF 20GA ASTM A653 GR40 GALV. STEEL EXCEPT AS NOTED. APPLY CONNECTORS TO EACH FACE OF TRUSS AND, UNLESS OTHERWISE LOCATED ON THIS DESIGN, POSITION CONNECTORS PER DRAWINGS 160 A-Z; THE SEAL ON THIS DRAWING INDICATES ACCEPTANCE OF PROFESSIONAL ENGINEERING RESPONSIBILITY SOLELY FOR THE TRUSS COMPONENT DESIGN SHOWN. THE SUITABILITY AND USE OF THIS COMPONENT FOR ANY PARTICULAR BUILDING IS THE RESPONSIBILITY OF THE BUILDING DESIGNER, PER ANSI/TPI 1-1995 SECTION 2.

MAX LOADING	REF PIGGYBACK
55 PSF AT	DATE 06/25/99
1.33 DUR.FAC.	DRWG PIGBACKB0699
50 PSF AT	-ENG DLJ/KAR
1.25 DUR.FAC.	
47 PSF AT	
1.15 DUR.FAC.	
SPACING 24.0"	