

TCFILLER0699  
BCFILLER0699

## Fillers

Top Chord Filler Detail  
Bottom Chord Filler Detail

# TOP CHORD FILLER DETAIL

+ 2X4 CONTINUOUS LATERAL BRACING AT 24" OC MAXIMUM SPACING. ATTACH TO EACH TOP CHORD WITH (2) 16d NAILS. BRACING MATERIAL TO BE SUPPLIED AND ATTACHED AT BOTH ENDS TO A SUITABLE SUPPORT BY ERECTION CONTRACTOR.

++ 2X4 SO. PINE #2 N OR SPF #1/#2 FILLER TOP CHORD.

+++ 2X4 SO. PINE #3 OR SPF #1/#2 VERTICAL WEBS SPACED 48" OC MAXIMUM.

\* 8/12 MAXIMUM PITCH.

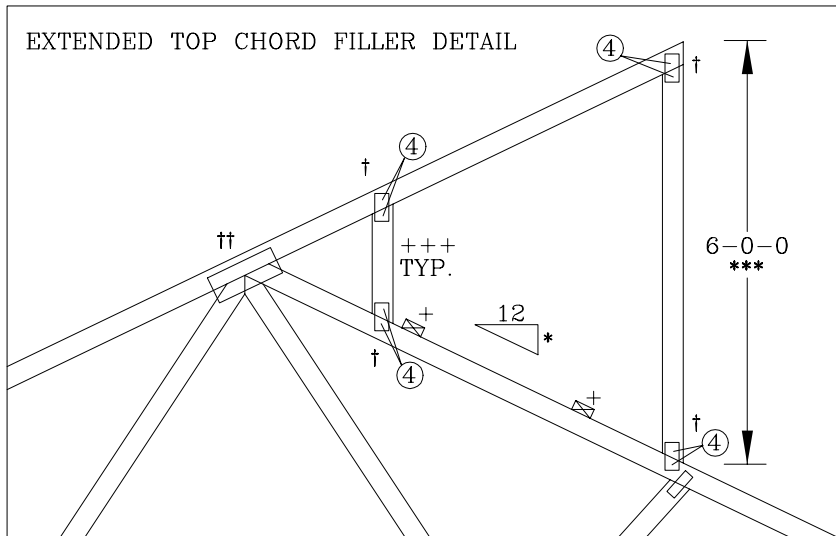
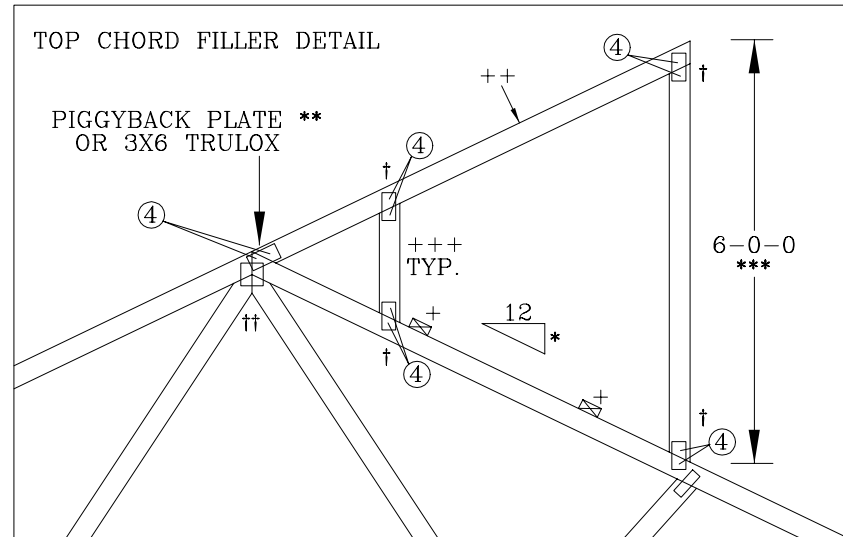
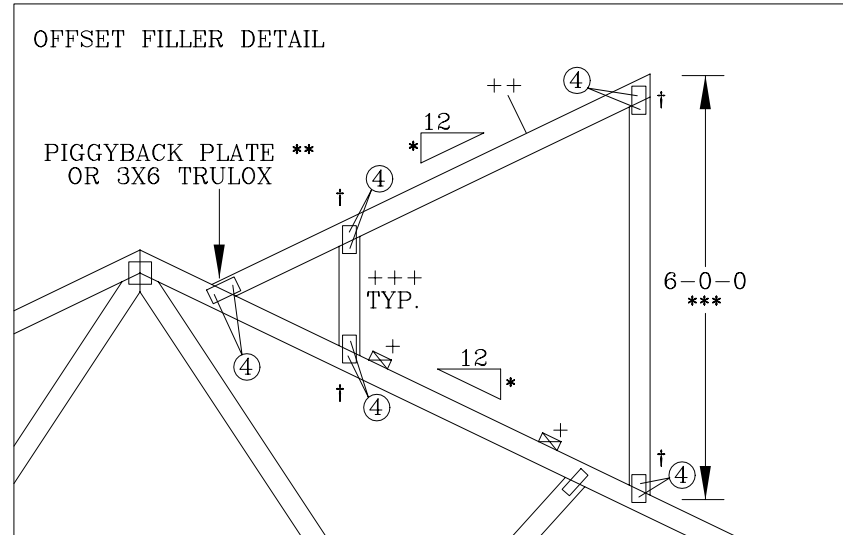
\*\* 2X8.25 PIGGYBACK SPECIAL PLATE. SEE DRAWING PIGBACKB0699 FOR PIGGYBACK SPECIAL PLATE INFORMATION.

\*\*\* 6'0" MAXIMUM HEIGHT.

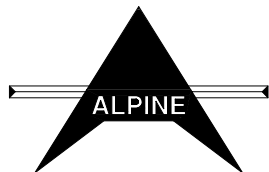
† W2X4 OR 3X6 TRULOX.

†† REFER TO ENGINEER'S SEALED DESIGN REFERENCING THIS DETAIL FOR LUMBER, PLATES, AND OTHER INFORMATION NOT SHOWN.

11 GAUGE (0.120")X1.375" NAILS REQUIRED FOR TRULOX PLATE ATTACHMENT. NAILS SPECIFIED IN CIRCLES MUST BE APPLIED TO EACH FACE OF EACH TRUSS PLY. SEE DWG 160TL FOR NAILING AND TRULOX PLATE REQUIREMENTS.



THIS DRAWING REPLACES DRAWING 884,080



**\*\*WARNING\*\*** TRUSSES REQUIRE EXTREME CARE IN FABRICATING, HANDLING, SHIPPING, INSTALLING AND BRACING. REFER TO HIB-91 (HANDLING INSTALLING AND BRACING), PUBLISHED BY TPI (TRUSS PLATE INSTITUTE, 583 D'ONOFRIO DR., SUITE 200, MADISON, WI. 53719) FOR SAFETY PRACTICES PRIOR TO PERFORMING THESE FUNCTIONS. UNLESS OTHERWISE INDICATED, TOP CHORD SHALL HAVE PROPERLY ATTACHED STRUCTURAL PANELS AND BOTTOM CHORD SHALL HAVE A PROPERLY ATTACHED RIGID CEILING. **\*\*IMPORTANT\*\*** FURNISH A COPY OF THIS DESIGN TO THE INSTALLATION CONTRACTOR. ALPINE ENGINEERED PRODUCTS, INC. SHALL NOT BE RESPONSIBLE FOR ANY DEVIATION FROM THIS DESIGN. ANY FAILURE TO BUILD THE TRUSSES IN CONFORMANCE WITH TPI OR FABRICATING, HANDLING, SHIPPING, INSTALLING AND BRACING OF TRUSSES. DESIGN CONFORMS WITH APPLICABLE PROVISIONS OF NDS (NATIONAL DESIGN SPECIFICATION PUBLISHED BY THE AMERICAN FOREST AND PAPER ASSOCIATION) AND TPI. ALPINE CONNECTORS ARE MADE OF 20GA ASTM A653 GR40 GALV. STEEL EXCEPT AS NOTED. APPLY CONNECTORS TO EACH FACE OF TRUSS AND, UNLESS OTHERWISE LOCATED ON THIS DESIGN, POSITION CONNECTORS PER DRAWINGS 160 A-Z. THE SEAL ON THIS DRAWING INDICATES ACCEPTANCE OF PROFESSIONAL ENGINEERING RESPONSIBILITY SOLELY FOR THE TRUSS COMPONENT DESIGN SHOWN. THE SUITABILITY AND USE OF THIS COMPONENT FOR ANY PARTICULAR BUILDING IS THE RESPONSIBILITY OF THE BUILDING DESIGNER, PER ANSI/TPI 1-1995 SECTION 2.

TC LL	MAX 30 PSF	REF	TC-FILLER
TC DL	MAX 15 PSF	DATE	06/25/99
BC DL	MAX 10 PSF	DRWG	TCFILLER0699
BC LL	0 PSF	-ENG	SJP/KAR
TOT.LD.	MAX 55 PSF		
DUR.FAC.	1.15 OR 1.33		
SPACING	24.0"		

# BOTTOM CHORD FILLER DETAIL

\* OPTIONAL INTERIOR OR CANTILEVER BEARING. MINIMUM PLATE SIZES (1X3 WAVE) MAY BE USED IF BEARING IS OMITTED. WEDGE OR VERTICAL MEMBER MUST COINCIDE WITH BEARING LOCATION.

+ 3X4 WAVE OR 4X8 TRULOX

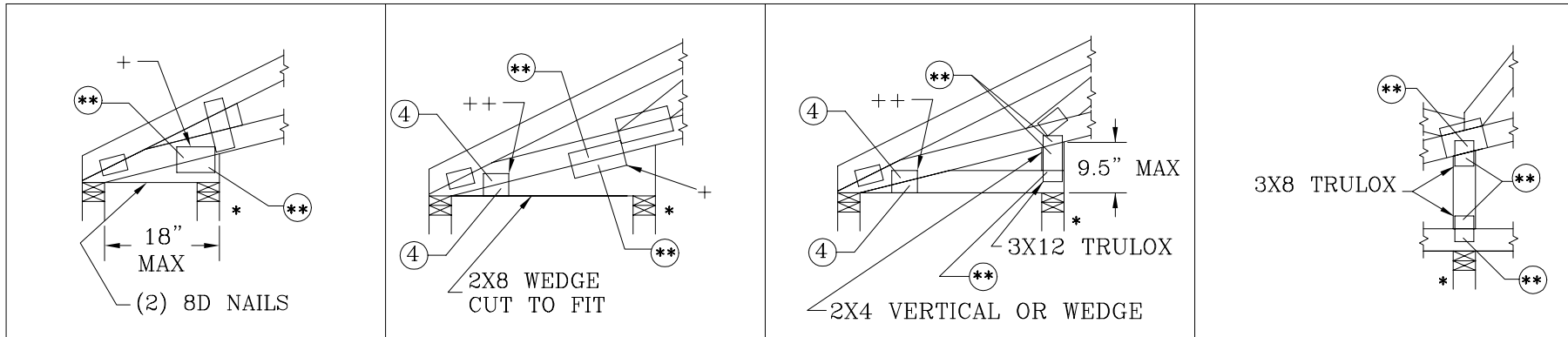
++ 2X4 WAVE OR 3X6 TRULOX

11 GAUGE (0.120")X1.375" NAILS REQUIRED FOR TRULOX PLATE ATTACHMENT. NAILS SPECIFIED IN CIRCLES MUST BE APPLIED TO EACH FACE OF THE TRUSS. SEE DWG 160TL FOR NAILING AND TRULOX PLATE REQUIREMENTS.

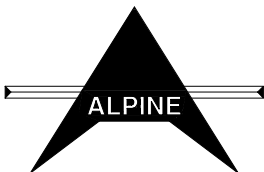
REFER TO ENGINEER'S SEALED DESIGN REFERENCING THIS DETAIL FOR LUMBER, PLATES, AND OTHER INFORMATION NOT SHOWN.

ALL TRULOX PLATES SHOWN ARE MINIMUMS. LARGER PLATES MAY BE REQUIRED TO ACCOMODATE REQUIRED NAILS (\*\*)

FILLER BOTTOM CHORD OR WEDGE SPECIES	MAXIMUM REACTION		MINIMUM BEARING AREA	** REQUIRED NAILS PER FACE WITH TRULOX PLATES				
	DOWNWARD	UPLIFT		1.00 D.O.L.	1.15 D.O.L.	1.25 D.O.L.	1.33 D.O.L.	1.60 D.O.L.
DOUGLAS FIR-LARCH	3281#	1656#	1.5" X 3.5"	12	11	10	9	8
HEM-FIR	2126#	1095#	1.5" X 3.5"	9	8	7	7	6
SPRUCE-PINE-FIR	2231#	1192#	1.5" X 3.5"	10	9	8	8	6
SOUTHERN PINE DENSE	3465#	1791#	1.5" X 3.5"	12	11	10	9	8
SOUTHERN PINE	2966#	1492#	1.5" X 3.5"	10	9	8	8	7
SOUTHERN PINE NON-DENSE	2520#	1343#	1.5" X 3.5"	9	8	7	7	6



THIS DRAWING REPLACES DRAWINGS A115 A115/R & 884,132



**\*\*WARNING\*\*** TRUSSES REQUIRE EXTREME CARE IN FABRICATING, HANDLING, SHIPPING, INSTALLING AND BRACING. REFER TO HIB-91 (HANDLING INSTALLING AND BRACING), PUBLISHED BY TPI (TRUSS PLATE INSTITUTE, 583 D'ONOFRIO DR., SUITE 200, MADISON, WI. 53719) FOR SAFETY PRACTICES PRIOR TO PERFORMING THESE FUNCTIONS. UNLESS OTHERWISE INDICATED, TOP CHORD SHALL HAVE PROPERLY ATTACHED STRUCTURAL PANELS AND BOTTOM CHORD SHALL HAVE A PROPERLY ATTACHED RIGID CEILING. **\*\*IMPORTANT\*\*** FURNISH A COPY OF THIS DESIGN TO THE INSTALLATION CONTRACTOR. ALPINE ENGINEERED PRODUCTS, INC. SHALL NOT BE RESPONSIBLE FOR ANY DEVIATION FROM THIS DESIGN. ANY FAILURE TO BUILD THE TRUSSES IN CONFORMANCE WITH TPI OR FABRICATING, HANDLING, SHIPPING, INSTALLING AND BRACING OF TRUSSES. DESIGN CONFORMS WITH APPLICABLE PROVISIONS OF NDS (NATIONAL DESIGN SPECIFICATION PUBLISHED BY THE AMERICAN FOREST AND PAPER ASSOCIATION) AND TPI. ALPINE CONNECTORS ARE MADE OF 20GA ASTM A653 GR40 GALV. STEEL EXCEPT AS NOTED. APPLY CONNECTORS TO EACH FACE OF TRUSS AND, UNLESS OTHERWISE LOCATED ON THIS DESIGN, POSITION CONNECTORS PER DRAWINGS 160 A-Z. THE SEAL ON THIS DRAWING INDICATES ACCEPTANCE OF PROFESSIONAL ENGINEERING RESPONSIBILITY SOLELY FOR THE TRUSS COMPONENT DESIGN SHOWN. THE SUITABILITY AND USE OF THIS COMPONENT FOR ANY PARTICULAR BUILDING IS THE RESPONSIBILITY OF THE BUILDING DESIGNER, PER ANSI/TPI 1-1995 SECTION 2.

TC LL	--	PSF	REF	BC FILLER
TC DL	--	PSF	DATE	06/25/99
BC DL	10.0	PSF	DRWG	BCFILLER0699
BC DL	--	PSF	-ENG	DLJ/KAR
TOT. LD	--	PSF		
DUR. FAC. 1.0/1.15/1.25/1.33				
SPACING 24.0"				